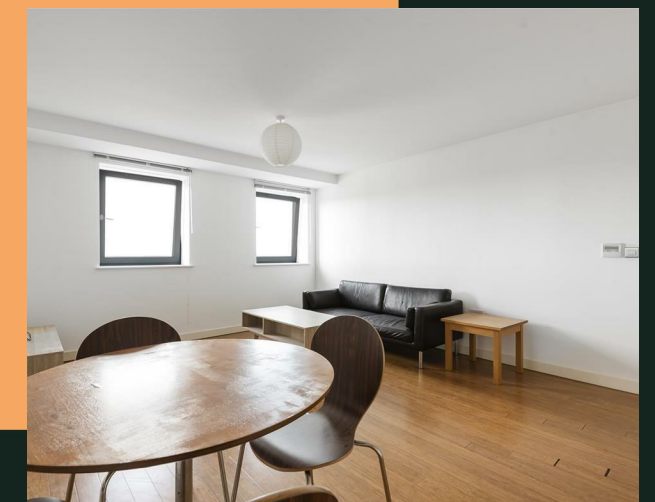
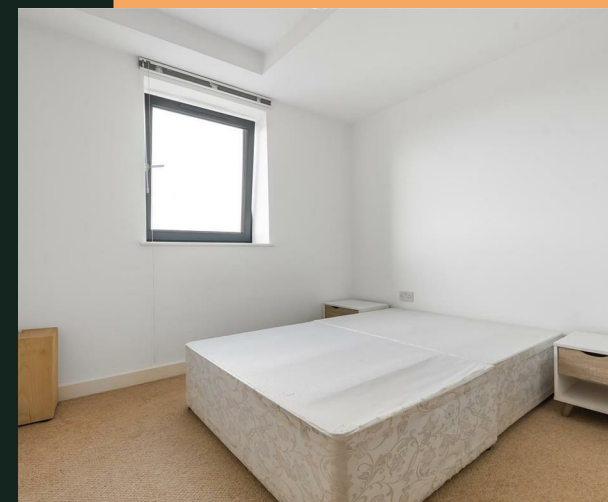


LS11

PROPERTY ADDRESS
416 Greenhouse Leeds
LS11 6AE

Energy Efficiency Rating		
	Current	Potential
Very energy efficient - lower running costs		
(92 plus) A		
(81-91) B		
(69-80) C	78	80
(55-68) D		
(39-54) E		
(21-38) F		
(1-20) G		
Not energy efficient - higher running costs		
England & Wales	EU Directive 2002/91/EC	



Call Us
01132440251

Email Us
leeds@vision-properties.co.uk

vision

We look at
estate agency
differently.

vision

- Total cost of first month: £1,561.53 (rent & deposit)
- Available now
- On-site gym for residents
- Excellent transport links

The modern apartment comes furnished and briefly comprises of an open-plan living and kitchen area with integrated appliances, a double bedroom and a bathroom. Residents can benefit from the on-site gym.

Greenhouse is situated in the regenerated Beeston Road area of Leeds, close to the M621 and is well connected to the M62 taking you East/West or the M1, taking you North/South, with great bus, cycle and walking links into the city centre.

Rent: £725 per calendar month
Holding deposit: £167.30
Deposit: £836.53

Available now, subject to acceptable referencing.

The photos are of a similar apartment in Greenhouse and are for illustration



Your Text Here

